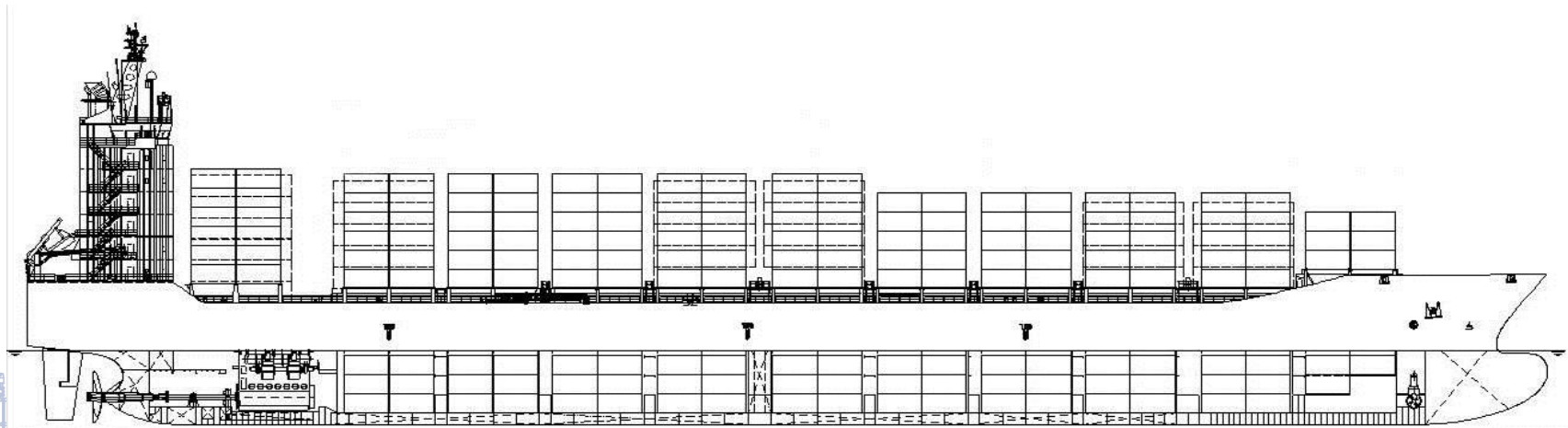


INDEPENDENCE CV2500



Main Dimensions

Length overall	207.40 m
Length between perpendiculars	195.40 m
Breadth, moulded	29.80 m
Depth	16.40 m
Design/scantling draught	10.10/11.40 m
Deadweight	27,000/33,500 t
Gross tonnage	25,410
Container capacity	
in holds - 6 tiers (1 tier high cube)	992 TEU
on deck - 6 tiers	1,418 TEU
total	2,410 TEU
Stow of 45' containers on deck	
total / 25t per container	220 / 135 cont.
Reefer sockets on deck/in holds	300/100
Generator capacity: TEU 275 x 11.0 kW x 0.6	
Dangerous goods on deck and in holds	
Capacity TEU 14t each acc. to IMO T=11.4 m	1,880 TEU
Tank capacity: HFO	2,540 m ³
MDO	175 m ³
Ballast water	9,300 m ³
Speed (T=10.1 m, 90% MCR, 15% s.m.)	22.0 kn

Class

Germanischer Lloyd + 100 A5 E "CONTAINER SHIP",
IW, SOLAS II-2, Reg.19
ENVIRONMENTAL PASSPORT
+ MC E AUT
Flag of Registry United States of America

Equipment for Cargo

Stack loads
in holds 144/180 t for TEU/FEU
on hatch no. 1, 2 55/ 75 t for TEU/FEU
on hatches no. 3 - 10 70/100 t for TEU/FEU
on main deck above engine room 60/ 90 t for TEU/FEU
Container cell guides in holds for FEU
Cargo cranes (foundations only) 3x SWL 45 t / 25 m

Ship's Equipment

Semi-balance rudder
Bow thruster 1 x 1,100 kW
2 combined anchor/mooring winches,
4 mooring winches
Freefall lifeboat 1x 28 pers.
Service crane 1.6 t / 12 m

Machinery

Main engine 2-stroke CMCR 21,770 kW
Fixed pitch propeller
Steam generating plant
 1 combined exhaust gas heated 2.3 t/h
 oil fired boiler 1.8 t/h
Incinerator 500,000 kcal/h
Diesel generator aggregates, total (electr.) 4,500 kW; 900 rpm
Integrated automation system
Voltages used for main consumers 450 V, 230 V / 60 Hz
Ballast system: double line 1 x 400 m³
Anti heeling system 1 x 600 m³
Water fire fighting system
CO₂ fire fighting system

Accommodation

Crew incl. pilot 23 pers.

Building the Future

30-Nov-15

Slide 1



part of Aker