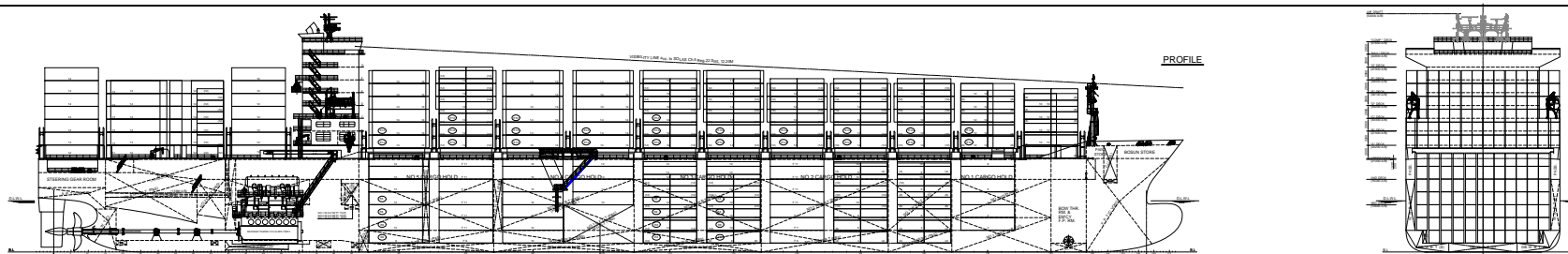


Aloha Class 3,600 TEU CV-LNG Ready

2014



MAIN DIMENSION

Length overall	abt.	260.3 m
Length between perp.		248.5 m
Breadth		35.0 m
Depth to main deck		21.0 m
Draught, design		11.6 m
Draught, scantling		12.2 m
Air draught (above base line)	abt.	54.0 m
Deadweight	abt.	51,400 MT
Service Speed	abt.	23.5 Kts
(at design draught, 87% SMCR, 15% sea margin)		
Cruising range	abt.	13,500 NM
Gross Tonnage	abt.	49,000 GT

CLASSIFICATION

✱100A5, Container Ship, ✱MC,AUT,RSD,GF,NAV-INS, IW, BWM(D2), LC, EP-D, RSCS,DG, Gas ready(D,MEi,AEi)
 FLAG United States

TANK CAPACITY

Heavy fuel oil	abt.	2,600 m ³
Marine gas oil	abt.	1,900 m ³
LNG fuel tanks (Option)	abt.	3,300 m ³
Fresh water tanks	abt.	600 m ³
Ballast water tanks	abt.	22,000 m ³
(included ballast water treatment system)		

COMPLEMENT

32 P

MAIN ENGINE

TYPE	MAN B&W 7S90ME-C10.5-GI US-EPA Tier II
NMCR	42,700 kW x 84.0 RPM
SMCR	38,000 kW x 84.0 RPM
NCR	33,060 kW x 80.2 RPM

POWER SUPPLY

Diesel generators	2 x 1,620 kW
	2 x 2,430 kW
Emergency generator	1 x 350 kW

MANEUVERING EQUIPMENT

Bow thruster	1 x 1,500 kW
Rudder Type	Full spade with Bulb

CARGO HATCH COVER

Type	: Steel pontoon type
Stack weight	: 65MT/20ft & 75MT/24ft & 140MT/40/45/53ft
Panel weight	: Max. 38MT of each panel (excluding container loose fittings)

CONTAINER CAPACITY

On deck	abt.	1,166	FEU
In hold	abt.	644	FEU
Total	abt.	1,810	FEU

Rows max. in holds/on hatches	12 / 14	Rows
Tiers max. in holds/on hatches	7 / 6	Tiers

Reefer plug		
Total(On deck/In hold)	abt.	400 FEU

Homogeneous loading 9T/TEU: abt.3,200 TEU
 (based on 9ft 6inches, 45% Container V.C.G)

Capable of carrying 20,40,45 and 53 Foot Containers
 Capable of carrying Dangerous Goods

NAVIGATION EQUIPMENT

- 3 - Radar plant (ARPA)
- 2 - ECDIS, 1 - Conning display, 1 - BNWAS
- 1 - Auto pilot, 2 - Gyro compass
- 2 - DGPS, 1- VDR, 1 - AIS
- 2 - Echo sounder, 1 - Speed log
- 1 - GMDSS, 1 - Satcom C, SSAS, LRIT

KOREA MARITIME CONSULTANTS CO., LTD.

BUSAN OFFICE : 9TH FLOOR, BYUCKSAN-DIGITAL VALLEY, 132-7 GAMJEON-DONG, SASANG-GU, BUSAN, KOREA

TEL : +82-51-660-6603/4 FAX : +82-51-660-6699

